

britax
römer

USER GUIDE

DUALFIX iSENSE

DUALFIX 3 i-SIZE

EN

61 – 105 cm

≤ 18 kg

2000035157 A5

BRITAX RÖMER Child Safety EMEA

www.britax-roemer.com | hello@britax-roemer.com

1. About this document

⚠ WARNING! This operating manual is a component of the product and contributes to its safe use. Non-compliance may lead to serious or even fatal injuries. If in doubt, do not use product and immediately contact your retailer.

- ▶ Read operating instructions.
- ▶ Keep with the product for reference.
- ▶ If the product is given to third parties, include the operating instructions with the product.

Contact information

If there are any questions, please get in touch.

BRITAX RÖMER Child Safety EMEA
www.britax-roemer.com
hello@britax-roemer.com

BRITAX RÖMER Kindersicherheit GmbH
Theodor-Heuss-Strasse 9
89340 Leipheim
Germany

BRITAX Excelsior Limited
1 Churchill Way West
Andover
Hampshire SP10 3UW
United Kingdom

BRITAX Nordiska Barn AB
Jörgen Kocksgatan 4
SE-211 20 Malmö
Sweden

2. Product description

01 Top button
02 USB-C charging connection
03 Bottom button
04 Red LED
05 Release button
06 Headrest
07 Shoulder pads
08 Shoulder straps
09 Adjustment button
10 Belt lock (red button)
11 Adjustment belt
12 Buckle tongues
13 Control element
14 Compartment

1. Buckle the seat module onto the base station.
2. Adjust the headrest height.
3. Check the child's position: head, shoulders, hips, and feet.
4. Adjust the shoulder straps.
5. Lock the seat module into the base station.
6. Buckle the child into the seat.
7. Adjust the harness straps.
8. Buckle the child into the seat.
9. Charge the battery.

Shoulder straps and headrest

A properly adjusted headrest ensures optimal protection for your child on the child seat. The headrest has been adjusted correctly when the shoulder straps run horizontally or just above the child's shoulders.

Loosening the shoulder straps 1

- ▶ Hold adjustment button down.
- ▶ Pull both shoulder straps forwards.
- ☞ **Do not** pull on the shoulder pads.
- ▶ Release adjustment button.

Adjust shoulder straps 2

- ▶ Hold down the release button on the headrest.
- ▶ Slide the headrest to the right shoulder strap height.
- ▶ Let go of the release button.
 - ☞ Headrest audibly locks.
- ▶ Push headrest down to check it has locked in.
 - ☞ Shoulder straps are horizontal or just above the child's shoulders. 3

Tighten shoulder straps 4

- ▶ Pull adjustment belt out straight.
- ☞ **Do not** pull adjustment belt upwards or downwards.

Buckle child in

- ▶ Secure the seat module on the FLEX BASE iSENSE base station. See operating instructions FLEX BASE iSENSE. 5
- ▶ Loosen the shoulder straps. See chapter "Shoulder belt and head rest" page 1. 1
- ▶ Press red button to open the belt lock. 6
- ▶ Move harness buckle forwards.
- ▶ Place child in the child seat.
 - ☞ Avoid thick clothing under the belt.
- ▶ Pass shoulder straps over the child's shoulders.

⚠ WARNING! Ensure that the shoulder straps **are not** twisted or reversed.

- ▶ Bring both buckle tongues together. 7
- ▶ Lock buckle tongues in harness buckle.
 - ☞ Buckle tongues audibly lock.

- ▶ Pull adjustment belt out straight. 4
- ☞ **Do not** pull adjustment belt upwards or downwards.
 - ☞ Place shoulder straps tight to the child's body.

⚠ WARNING! Ensure that the hip straps are positioned as low as possible over your child's hips.

Unbuckle child 8

- ▶ Press red button to open the belt lock.
- ▶ Remove child.

Charge battery 9

☞ Only available with DUALFIX iSENSE.

⚠ WARNING! Risk of explosion and acid burn. Unintended use can lead to damage to the battery.

- ▶ **Do not** immerse battery in water.
- ▶ Keep battery away from fire.
- ▶ Protection battery against high temperatures. Note the recommended use and storage temperatures.
- ▶ **Never** remove, modify or replace battery. It can explode or release poisonous substances.
- ▶ If the battery is damaged or has deformations or cracks, do **not** dismantle it or modify its structure.
- ▶ If the battery loses electrolytes, avoid touching the extremely corrosive liquid. If there is contact with the eyes or skin, see a doctor.

Fully charge the battery before the first use. The first charging process enables the light functions. Use the charging cable provided when charging the battery. This guarantees the stated life of the battery. Only charge the battery in ambient temperatures of +10 to +40° C. Do not insert foreign objects into the charging socket. The battery has a life of at least 500 charge cycles.

- ▶ Connect charging cable to one of the two USB-C charging connections.
- ☞ Each control element has a USB-C charging connection.

⚠ WARNING! Risk of strangulation. **Do not** lead the charging cable across the child seat. Lead the charging cable away from the child seat.

- ▶ Connect charging cable to a 5V USB adapter.
 - ☞ If the red LED is permanently on, the battery is charged.
 - ☞ If the red LED is no longer on, the battery is fully charged.
- ▶ Remove charging cable and store out of reach of children (e.g. in the glove compartment).
- ▶ Recharge the battery as soon as the charge level is low.
- ☞ You can check the charge level. Press any button. If the red LED slowly flashes three times, the charge level capacity is low.
- ☞ The interior lighting can be used during charging.

Interior lighting

- ☞ Only available with DUALFIX iSENSE.
- ☞ Operation of the BABY-SAFE iSENSE differs from the DUALFIX iSENSE.

The interior lighting can be controlled manually both with the left and right control element. In addition, delayed switching-off can be activated. The light switches off automatically after a few minutes.

Switch on light / increase brightness 10

- ▶ Briefly press the top button.
 - ☞ Light switches on.
- ▶ Briefly press the top button again within a few minutes.
 - ☞ Brightness is increased.
- ☞ Brightness can be increased twice. Pressing the top button again switches off the light.

Switch off light / reduce brightness 11

- ▶ Hold down bottom button.
 - ☞ Light switches off.
- ☞ The brightness can be reduced by briefly pressing the bottom button.

Activate delayed switching on

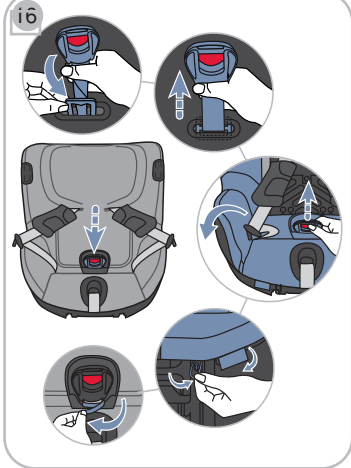
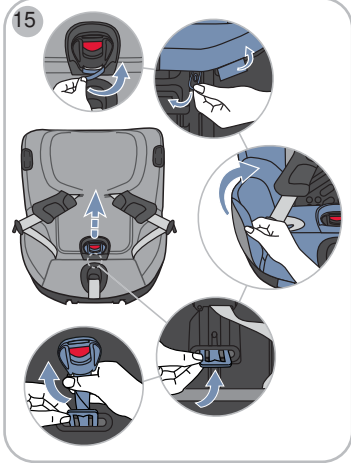
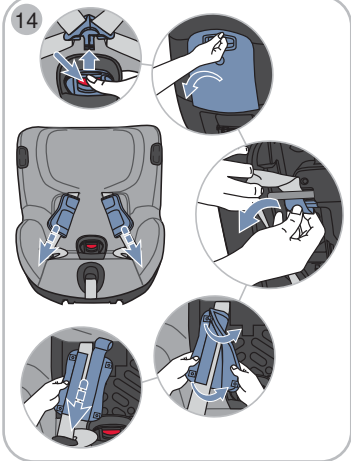
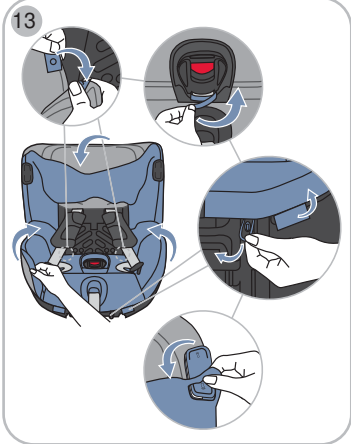
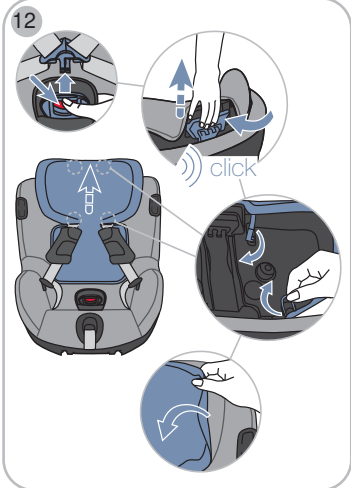
- ▶ Hold down the top button until the light flashes once.
 - ☞ Delayed switch-off is enabled.
 - ☞ The light switches off automatically after a few minutes.

3. Intended use

This product has been designed, tested and approved according to the requirements of the European Standard for Child Safety Equipment R129/03 (i-Size universal ISOFIX).

This product may only be used in combination with the station FLEX BASE iSENSE for securing one child in the vehicle.

	Rear-facing	Forward-facing
Body height	61 - 105 cm	76 - 105 cm
Body weight	Maximum 18 kg	



4. Safety information

Risk of injury from damaged child seat

In the event of an accident at a collision speed of more than 10 km/h, the child seat may be damaged without the damage being immediately visible. Serious injuries may result from another accident.

- Replace product following an accident.
- Have damaged product inspected (even if it has fallen onto the ground).
- Regularly check all important parts for damage.
- Ensure that all mechanical components work properly.
- Never lubricate or oil parts of the product.
- Properly dispose of the damaged product.

Risk of burns from hot components

Components of the product can become hot in direct sunlight. Children's skin is sensitive and maybe harmed as a result.

- Protect the product against intensive direct sunlight when not in use.

Risk of injury if installed incorrectly

If the product is installed or used other than as described in the operating instructions, serious or even fatal injuries may result.

- Only use on a car seat facing the direction of travel.

- Note and follow the instructions in the vehicle handbook.

Risk of injury from front airbag

Airbags are designed to protect adults. If the child seat is too close to the front airbag, slight or serious injuries can arise.

- For rear-facing use, disable front airbag.
- If the child seat is secured on the passenger seat, slide the passenger seat backwards.
- If the child seat is secured on the second or third row of seats, slide the corresponding front seat forwards.
- Note and follow the instructions in the vehicle handbook.

Risk of injury during use

The temperature in a vehicle can rise dangerously quickly. In addition, it is dangerous to leave the vehicle on the side facing the street.

- Never leave a child unsupervised in the vehicle.
- Only fasten or remove seat module from the footpath-side.

Risk of injury from unsecured objects

In the case of an emergency stop or accident, unsecured objects or people may cause injury to other occupants in the vehicle.

- **Never** secure your child by holding them tightly on your lap.
- Secure backrests of the vehicle find (e.g. engage foldable rear).
- Secure all heavy or sharp-edged objects in the vehicle (e.g. on the parcel shelf).
- Do not place objects in the foot well.
- Ensure that everyone in the vehicle has their seatbelts fastened.
- Ensure that the product is always secured when it is in the car, even if no baby is being transported.

Risk of injury due to missing seat cover

The seat cover is an integral safety component of the child seat. If the seat cover is **not** used, this may lead to serious or even fatal injuries.

- Only use original BRITAX RÖMER replacement seat covers.
- Replacement seat covers are available from your retailer.

How to avoid damaging the product

- Never use product in a free-standing position, even for testing.
- Product is not a toy.
- Ensure that the product is not trapped between hard objects (car door, seat rails, etc.).
- Keep product away from: Damp, moisture, liquids, dust and salt spray.
- Do not lean heavy objects on the product.

Risk of injury as a result of prohibited modification


This approval is invalidated if you make any modifications to this product. Changes may only be made by the manufacturer. The stickers on the product are an important component of the product.

- Do not make any changes.
- Do not remove stickers.


Avoid damaging the vehicle

- Sensitive car seat covers may be damaged.
- Use a BRITAX RÖMER child seat base. These are available separately.

5. Use in the vehicle

 **WARNING!** This product is approved exclusively for use with the FLEX BASE iSENSE base station.

- Note and follow instructions for the FLEX BASE iSENSE.


 Fastening this child seat to the base station is described in the instructions for the FLEX BASE iSENSE.


6. Cleaning and care

- Clean plastic parts with soapy water.
- Do not use abrasive cleaning agents (e.g. solvents).

Clean cover


Remove cover

- Loosen the shoulder straps. See chapter "Shoulder straps and headrest" page 1.  **01**

- Press red button to open the belt lock.  **12**

- Extend headrest as far as possible. See chapter "Shoulder belt and head rest" page 1.

- Loosen cover hooks on the headrest.
- Loosen the cover from the headrest and pull forwards.
- Loosen rubber loops under the headrest.
- Remove cover from the headrest.

- Loosen push buttons.  **13**
- Release Velcro on the padded crotch.
- Loosen rubber loops and plastic cards in the leg area.
- Remove cover from the edge of the seat.
- Carefully remove cover from the control elements (DUALFIX iSENSE).
- Remove cover.

 **WARNING! Never** use product without cover.

Wash cover


- Note information on the washing label.

Attach cover

- Proceed as above in the reverse order.

Clean shoulder pads

Remove shoulder pads **14**

- Loosen the shoulder straps. See chapter "Shoulder straps and headrest" page 1.  **01**
- Press red button to open the belt lock.
- Undo Velcro.
- Open lock.
- Pull shoulder straps out slightly.
- Hang belt loops from the plastic web.
- Pull shoulder pads out from the front.

 **WARNING! Never** use product without shoulder pads.

Wash shoulder cushion

- Note information on the washing label.

Attach shoulder pads

- Proceed as above in the reverse order.

Look after harness buckle

Dirt and foreign objects can impair the function of the harness buckle. Look after the harness buckle if the buckle tongues only lock into the harness buckle with difficulty if at all.

Remove harness buckle **15**

- Remove cover from the seat.
- Turn the crotch strap with the metal plate 90°.
- Slide the metal plate through the harness slot with the narrow edge facing forwards.

Clean belt lock

- Soak the harness buckle for an hour in warm water with cleaning agent.
- Rinse harness buckle and leave to dry.

Fit belt lock **16**

- Slide the metal plate of the harness buckle through the belt slot.
- Turn the crotch strap with the metal plate 90°.
 - ↳ Metal plate is at right angles to the direction of travel.
- Check fastening by pulling hard on the harness buckle.
- Thread harness buckle through cover.
- Attach cover to seat.

7. Temporary storage of product

If you do not use the product for a longer period, please note the following information.

- Store product in a secure and dry location.
- Maintain storage temperature between 20 and 25 °C.
- **Do not** lean heavy objects on the product.
- **Do not** store product directly next to sources of heat or in direct sunlight.

The following also applies to the DUALFIX iSENSE:

- Charge battery before temporary storage.
- Fully charge the battery at least every 12 months.

8. Disposal

Please follow the disposal regulations applying in your country. Do not dismantle this product.

The DUALFIX iSENSE must be disposed of with electrical waste.

